

Types of Barrier Free Access Facilities - Mui Wo Government Offices

Main entrances, exits and indoor main access routes free from barriers			
Automatic doors (G/F, General Out-patient Clinic)	Access routes	Ramps (Handrails, Tactile warning tiles and Braille information)	
			
Staircases (Handrails and Braille information)		Staircases (Tactile warning tiles)	
			

Accessible lift

**Control buttons with braille and tactile markings and
Emergency alarm push button in a tactile bell shape**



**Intercom, Indication light and
Audible indication to indicate the direction of travel and position of lift car**



Accessible lift

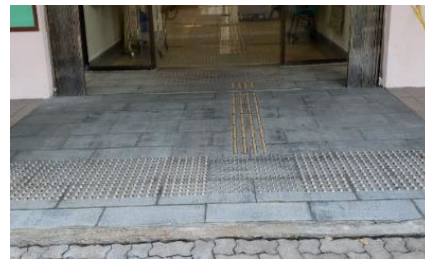


Lobby with assistive provisions for people with a disability

Braille and tactile floor plan



Tactile guide path









Accessible public information/service counter



Visual fire alarm system



Accessible toilets (G/F, General Out-patient Clinic)

Manoeuvring space	Horizontal and vertical grab rails adjacent to the water closet	Tap for wash basin be automatic or of lever control type
		
Emergency call bell	Folding grab rail on the wide side of cubicle adjacent to the water closet	Flushing control mounted on the wide side of cubicle
		

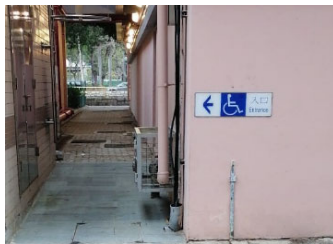
Erection of signs

Large sized symbol with luminous contrast signages



Accessible parking spaces

Located in proximity and with accessible route to an accessible lift



International symbol of accessibility on the floor

