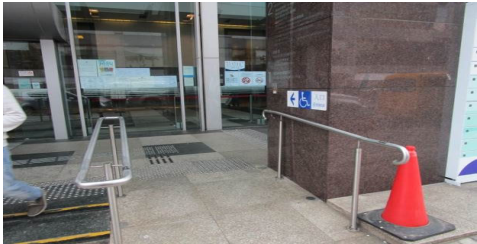
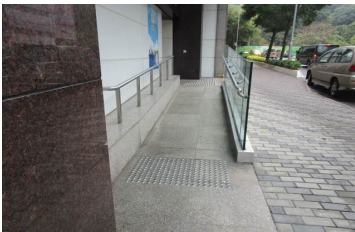



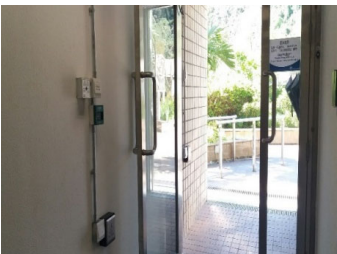
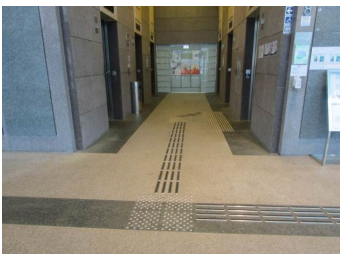


Types of Barrier Free Access Facilities - Sha Tin Government Offices

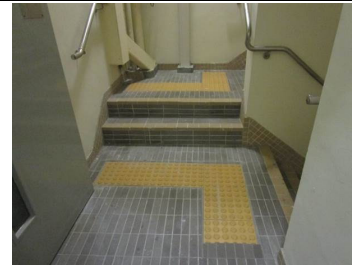
Main entrances, exits and indoor main access routes free from barriers			
Ramps (Handrails, Braille information and Tactile warning tiles)			
			
Automatic doors (entrance lobby on G/F)	Automatic doors (podium garden on 4/F)	Access routes	
			

Carpark (B1/F to B3/F)

Ramps (Handrails, Tactile warning tiles and Braille information)



Staircases (Handrails, Tactile warning tiles and Braille information)



Accessible lift

**Secondary control panel for over-spilled floor numbering buttons and
Emergency alarm push button in a tactile bell shape**



**Intercom, Indication light and
Audible indication to indicate the direction of travel and position of lift car**



Control buttons with braille and tactile markings



Lobby with assistive provisions for people with a disability

Braille and tactile floor plan



Tactile guide path



Accessible public information/service counter



Visual fire alarm system



Accessible toilet (G/F & 1/F to 15/F)

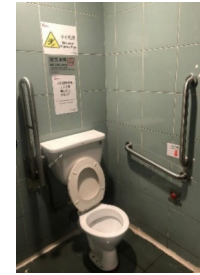
Manoeuvring space and folding grab rail on the wide side of cubicle adjacent to the water closet



Emergency call bell



Horizontal and vertical grab rails adjacent to the water closet



Tap for wash basin be automatic or of lever control type



Visual fire alarm system



Flushing control mounted on the wide side of cubicle



Erection of signs

Large sized symbol with luminous contrast signages



Accessible parking spaces (B2/F & B3/F)

International symbol of accessibility on the floor



Located in proximity and with accessible route to an accessible lift

